

SHARP

ESSENTIALS SERIES MONOCHROME DOCUMENT SYSTEMS

Smart · Secure · Sustainable



BP-51M26
BP-51M31
BP-51M36
BP-51M45



The Monochrome Essentials Series from Sharp.

Intelligent devices to help businesses work simply smarter.

Built for today's dynamic workstyles, these monochrome document systems feature an intelligent design that offers seamless, **secure collaboration while supporting sustainability** in modern office environments. Integrated access to popular cloud services, as well as enhanced cloud-based device management make it easy to streamline communication while ensuring maximum up-time.



BP-51M31 shown with Job Separator.

A Smart MFP That Drives Efficiency

These MFPs leverage the latest technology to help users manage their workflow and get their work done with ease and efficiency. Innovative features like **AI assisted scanning** with auto skew correction and image format detection ensure scanned documents are processed correctly.

Easy to Operate

An **intuitive touchscreen display** that is built on an award-winning user interface is easy to navigate, enabling users to execute their jobs quickly and efficiently.

Modern Appearance

Elegant exterior design offers a contemporary color scheme, soft-close paper drawers, and easy-roll casters to make this series a **perfect fit for any office environment**.

Comprehensive Data Security

The Essentials Series utilizes leading, **multi-layered security features** to help ensure your document data and personal information remains safe. These models have been security validated by Keypoint Intelligence and Agile Cybersecurity Systems.

A Responsible Approach to Design

Sharp continues its **commitment to sustainability** by designing document systems that are compliant with EPEAT, RoHS, Blue Angel and other environmental initiatives. These models utilize approximately 50% recycled plastic and offer among the lowest TEC values in their category.

Smart features that optimize productivity.

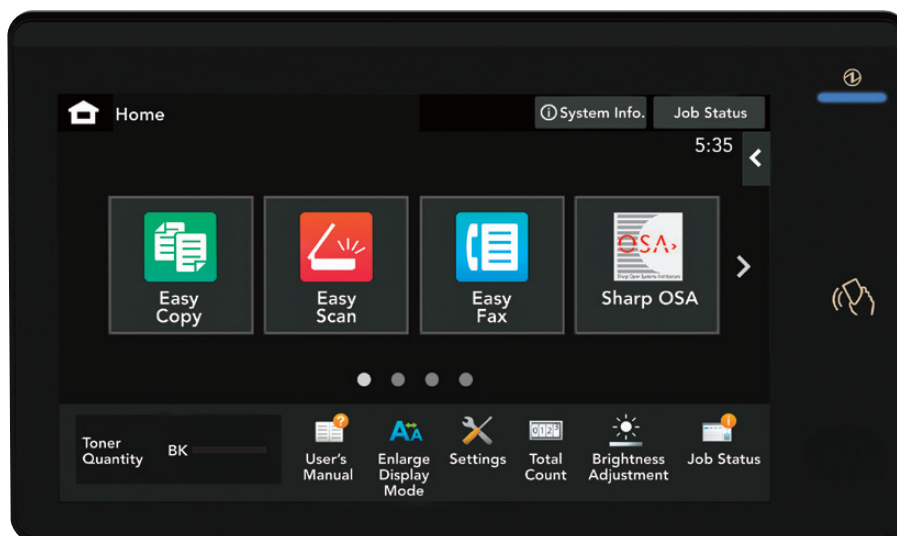
Streamlined workflows that are smart, secure and fit today's diverse work styles.

AI assisted
scanning



Integrated access
to cloud services

Strong multi-layer
security



10.1" (diagonally measured) customizable touchscreen display.



BP-51M31 shown with Inner Folding Unit, Right Side Exit Tray and 4-drawer Paper Deck.

- **100-sheet reversing** single-pass feeder scans originals at speeds of up to 80 images per minute.
- Flexible paper handling supports **media up to 300 gsm** and **COM-10 envelopes** from the standard paper drawer.
- Inner Folding Unit option offers a **variety of fold patterns**, including c-fold, z-fold and others.
- **Smart controller design** ensures maximum device uptime with self-healing features that remediate CPU errors and automatic firmware updates that keep the device current.
- Provides seamless access to Microsoft services with **Microsoft Entra ID** in Azure native environments.
- Supports **Synappx Manage**, a cloud-based device management solution that enables collaborative visibility with your service providers—helping to reduce response time and business disruption.
- **Intuitive touchscreen** display is easy to navigate, enabling user to execute their jobs quickly and efficiently.
- Collaborate with remote workers using **popular cloud services**, such as Microsoft Teams, Google Drive™, Dropbox and others.*
- **Leading security features** such as BIOS Integrity Check with self-recovery, Firmware Attack Prevention and Intrusion Detection help safeguard against potential threats.
- Supports **Microsoft Modern Print Platform** including Universal Print and driverless printing with the Sharp Print Support Application (PSA).
- Designed with approximately **50% recycled** plastic and offers among **the lowest TEC value** and stand-by power consumption in its class.

*Some features require optional equipment and/or software.

A smart design that helps drive efficiency.

From media handling to workflow and collaboration, the Essentials Series delivers the features businesses need to get the job done.

Sharp document systems can streamline your workflow, so you can focus on what matters most—your business. Easily scan documents at speeds up to 80 ipm using the 100-sheet reversing single-pass document feeder. Image processing with **AI technology** helps optimize resolution, compression, and document alignment, correcting skewed pages and detecting original sizes on the fly. In addition, **Easy Modes streamline everyday tasks**—making scanning workflows more efficient for every user.



Print, Scan and Share Documents Easily¹

Collaborate effortlessly—whether in the office or working remotely. With Cloud Connect, your team can easily access popular cloud services like Microsoft Teams, Google Drive, and more, directly from the MFP. The Sharp Application Portal simplifies management, enabling quick installation and updates right from the device's touchscreen.



Integrate with Email Applications

In addition to native capability, the **Email Connect** feature enables seamless scan-to-email integration with Microsoft Exchange/365 and Gmail™ user accounts, making it easy to identify the sender of scanned files.¹

Intelligent Image Processing¹

Scan documents to popular file formats including Microsoft Word, PowerPoint and Excel, as well as Searchable PDF, Encrypted PDF and others. Direct Print the same file types from thumb drives, cloud applications and mobile devices.² **Adobe Embedded Print Engine** direct prints PDF files with greater speed and rendering accuracy.

Flexible Printing Solutions

Standard PCL 6 and optional Adobe PostScript 3 printing are offered. **Serverless Print Release** enables users to print a job and release it from up to eight supported models. The Essentials Series also supports the **Modern Print Platform from Microsoft**, which includes Universal Print and Windows Protected Print mode. A Sharp Print Support Application (PSA) is also available, which provides a customized printing experience.



¹ Some features require optional equipment and/or software.

² This function is enabled via Qualcomm DirectOffice technology.

Smart · Secure · Sustainable

Intelligent features with strong security.

The Monochrome Essentials Series document systems offer modern workflow features designed for today's dynamic office environments.

Reversing Single Pass Feeder (RSPF)

100-sheet document feeder scans originals at speeds of up to 80 images per minute.

Smart Scan

AI assisted scanning technology can automatically adjust resolution, compression, as well as detect original size and adjust for skew.

Easy to Operate

Intuitive touchscreen is easy to navigate and delivers the responsiveness and accuracy users expect.

Microsoft Friendly

Seamlessly combines advanced security and printing with Universal Print, the Sharp PSA and Entra ID within Microsoft modern print environment.

Exceptional Image Quality

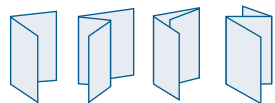
1,200 x 1,200 dpi resolution delivers razor-sharp text and graphics.

Antivirus Protection

Optional Bitdefender antivirus utilizes AI and other advanced technologies to block malware threats and network intrusions.

Advanced Finishing

Sharp gives you a variety of high-performance finishers to choose from to help complete the job on time. Inner folding unit option offers four popular folding patterns.



Half-fold Z-fold C-fold Accordion-fold

Flexible Paper Handling

Feed up to 300 gsm media through the paper drawers and supports up to 12" x 18" output size.

Large Capacity Cassette

Available large capacity cassette offers an additional 3,000-sheet capacity for a maximum on-line paper capacity of 6,300 sheets.

Comprehensive Multi-layer Security

Leading features such as BIOS integrity check, Firmware Attack Prevention and Intrusion Detection help safeguard against potential threats.

Easy Access to Cloud Services

Integrates with popular cloud services for a streamlined user experience.*

Environmental Commitment

Among the lowest TEC value and standby power consumption. Designed using 50% recycled plastic.



Centralized device management helps ensure optimal uptime.

Seamlessly connect technology and drive service efficiency.

Synappx Manage cloud service enables IT administrators and service providers to remotely manage Sharp MFPs from a single portal. Proactive monitoring and remediation helps minimize administrator burden, as well as provide insight for optimized investments.

Manage Devices From Anywhere

Device configuration, status, and security are managed remotely via a cloud-based solution—perfectly suited for today's distributed and flexible work environments.

Do More with Less

Automate tasks like power management to minimize time on devices and increase device-readiness through central control.



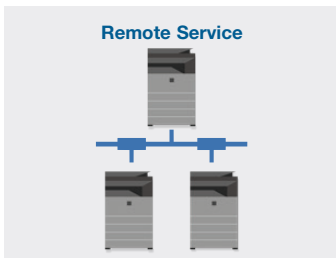
Keep Your Printers Secure

Deploy consistent security policies for MFPs and printers, monitor device security and firmware status, and auto remediate issues in real time.

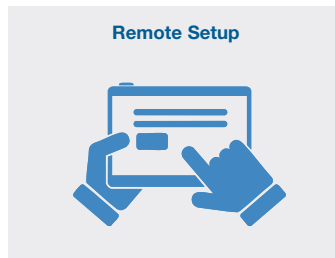
Enhance Employee Experience

Maximize device uptime to help ensure uninterrupted employee productivity and allow focus on critical tasks.

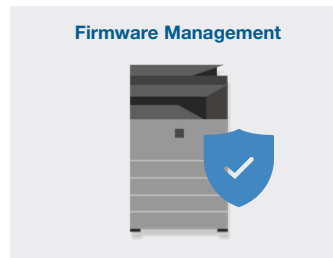
With **Synappx Manage**, service providers can resolve issues and reduce downtime with remote monitoring and remediation.



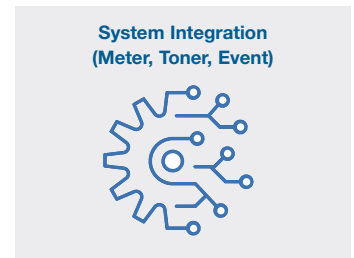
Remote Service



Remote Setup



Firmware Management



System Integration
(Meter, Toner, Event)

Server-based **Sharp Remote Device Manager (SRDM)** is also offered for customers who prefer to keep the solution on-site, offering similar capabilities such as remote device and security management.

Collaborate on-the-go with quick access to mobile devices.

The Essentials Series makes it easy to share data with tablets and smartphones even in busy office environments.



Print with Popular Mobile Technologies¹

The models support printing using **popular mobile technologies** such as Apple AirPrint®, and Android™ printing with the Sharp Print Service plug-in.

Advanced Wireless Networking

Print **directly to the MFP** from mobile devices without interfering with the corporate network!

Touchless Operation

With **Synappx Go**, simply scan the QR code or tap the NFC tag to unlock easy print release, scan/print from cloud services, and more.

Scan and Print with Sharpdesk Mobile

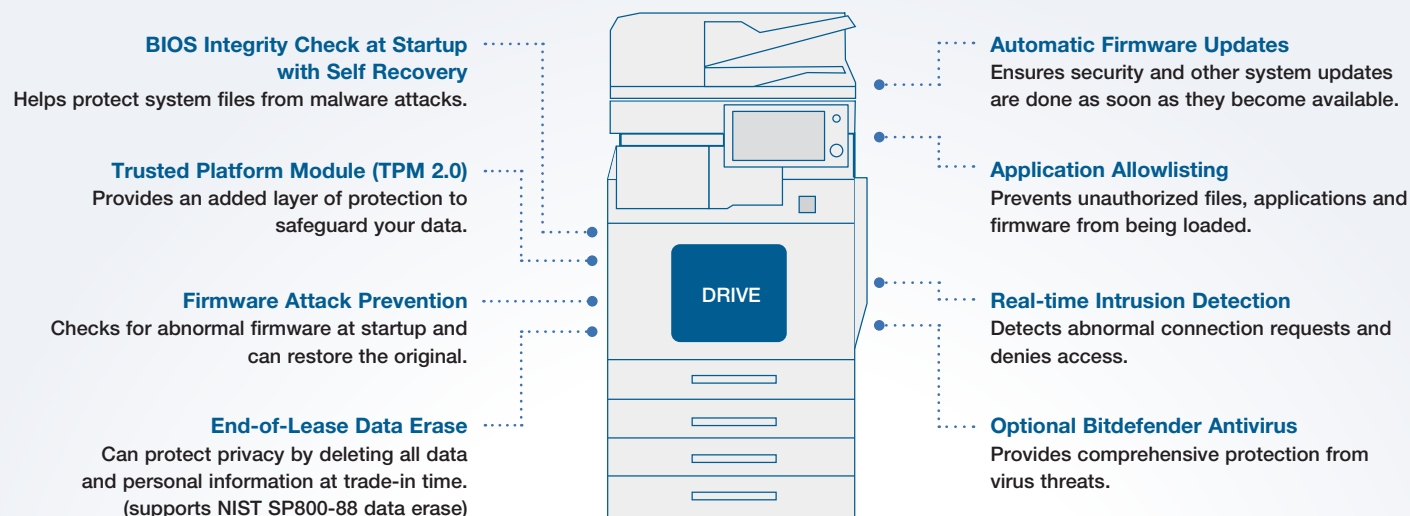
Quickly scan and print files from your tablet or smartphone with the free **Sharpdesk Mobile app**.²

¹ Some features require optional equipment and/or software.

² Go to www.sharppusa.com for a list of supported equipment and operating systems.

Multi-layer security features to help businesses stay a step ahead of hackers.

The Essentials Series leverages advanced security technologies to help protect sensitive data and support regulatory requirements.



- **Seamless access to Microsoft services with Microsoft Entra ID Authentication** (in Azure native environments).
- **Active Directory (AD) Integration** Enables the MFP to join the network domain as a computer, making it a trusted device.
- **Supports AD Group Policy** Allows administrators to centrally manage select security settings and enforce their own policy.
- **256-bit AES Encryption** Ensures data that resides on the local drive is protected.
- **Protects Access to the Device** Supports IP/MAC address filtering, 802.1x authentication and port control protect access to the device.
- **Protects Data in Transit** IPsec and SMB 3.1.1 protocols, as well as TLS 1.3 use data encryption to protect data.
- Integrates with **ConnectWise SIEM** (Security Information and Event Management system).
- **Complies with the latest Common Criteria** requirements for HCD cPP v.1.0e when optional Data Security Kit is enabled.*
- **Authority Groups** Enables administrators to define various groups for different users, which can limit or restrict access to specific features.
- **Sharp is ISO/IEC 27001:2022 certified** and committed to delivering high level information securely.
- **Keypoint Intelligence Security Validation** The Essentials Series models have been security validated by Keypoint Intelligence and Agile Cybersecurity Systems.



Environmental Commitment

Sharp is committed to environmental sustainability and corporate responsibility.

A Responsible Approach to Design

Sharp workgroup MFPs adhere to the Sharp Corporation Green Products Guidelines, which requires designing products that consume less power, use 50% recycled materials and reduce materials used in packaging.

Toner Recycling Program

Sharp offers zero-waste-to-landfill recycling for Sharp consumables at no cost to our customers and encourages them to recycle their Sharp toner cartridges by providing them with a pre-paid recycling kit for return to our facility.

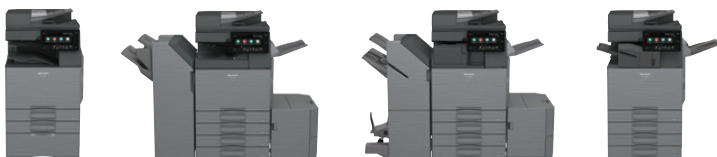
Environmental Commitment

The Sharp Essentials Series models are ENERGY STAR® 3.2 qualified and RoHS compliant. These products also have among the lowest TEC values in their category as well as one of the lowest stand-by power consumption ratings. Sharp MFPs are EPEAT® compliant.

For more information about Sharp environmental leadership including information about energy efficient products, electronics, or toner cartridge recycling, please visit www.sharpusa.com/environment.

The Monochrome Essentials Series. Smart. Secure. Sustainable.

Designed with intelligent features that offer seamless, secure collaboration while supporting sustainability in modern office environments. To learn more, visit www.sharpusa.com.



SHARP

SHARP ELECTRONICS CORPORATION
100 Paragon Drive, Montvale, NJ 07645
1-800-BE-SHARP • www.sharpusa.com

Design and specifications subject to change without notice.



©2025 Sharp Electronics Corporation. All rights reserved. Sharp, Sharp OSA, Sharpdesk, My Sharp, and all related trademarks are trademarks or registered trademarks of Sharp Corporation and/or its affiliated companies. Microsoft, Active Directory, Excel, Microsoft 365, Microsoft Teams, OneDrive, PowerPoint, SharePoint, Windows, Microsoft Entra, and Windows Server are trademarks of the Microsoft group of companies. Android, Gmail, and Google Drive are trademarks or registered trademarks of Google LLC. Adobe and PostScript are either registered trademarks or trademarks of Adobe in the US and/or other countries. Qualcomm DirectOffice is a product of Qualcomm Technologies, Inc. and/or its subsidiaries. Qualcomm is a trademark of Qualcomm Incorporated, registered in the United States and other countries. DirectOffice is a trademark of CSR Imaging US, LP, registered in the United States and other countries. AirPrint is a trademark of Apple Inc., registered in the US and other countries. Bitdefender is a trademark or registered trademark of Bitdefender SRL. ENERGY STAR and the ENERGY STAR mark are registered trademarks owned by the U.S. Environmental Protection Agency. All other trademarks are the property of their respective owners.