

# SHARP

## VERSATILE MONOCHROME MULTIFUNCTION PRINTERS

simply smarter



BP-B540WR  
BP-B550WD



## A smarter monochrome multifunction printer

Propelling business communications into the future with advanced connectivity.

Designed to fit today's diverse workstyles, the BP-B540WR and BP-B550WD compact multifunction printers (MFPs) enable workers to collaborate and share information seamlessly and securely throughout the office environment. Enhanced cloud services such as Microsoft Teams make it easy for hybrid workers to streamline communication and boost productivity.



### Easy-to-use Touchscreen

The easy-to-use Sharp touchscreen display is designed to deliver an accurate responsive user experience, imperative for today's sophisticated workflows.

### Technology Focused on Efficiency

The BP-B540WR/B550WD utilize modern technology to help users get their work done with ease and efficiency. Innovative features and enhanced auto skew correction ensure jobs come out right the first time, every time.

### Leading Security

To protect endpoint devices from security threats, the BP-B540WR/B550WD use industry leading security features.

### Versatile Application Integration

The BP-B540WR/B550WD maximize productivity and collaboration with easy access to expanded services. Additionally, these devices quickly connect with mobile devices to print and scan files, and utilize touchless operation with the Sharp Synappx Go app.

### Flexible Sleek Design

Elegant cabinet design with contemporary color scheme makes the BP-B540WR and BP-B550WD a perfect fit for any office environment.



BP-B540WR shown.



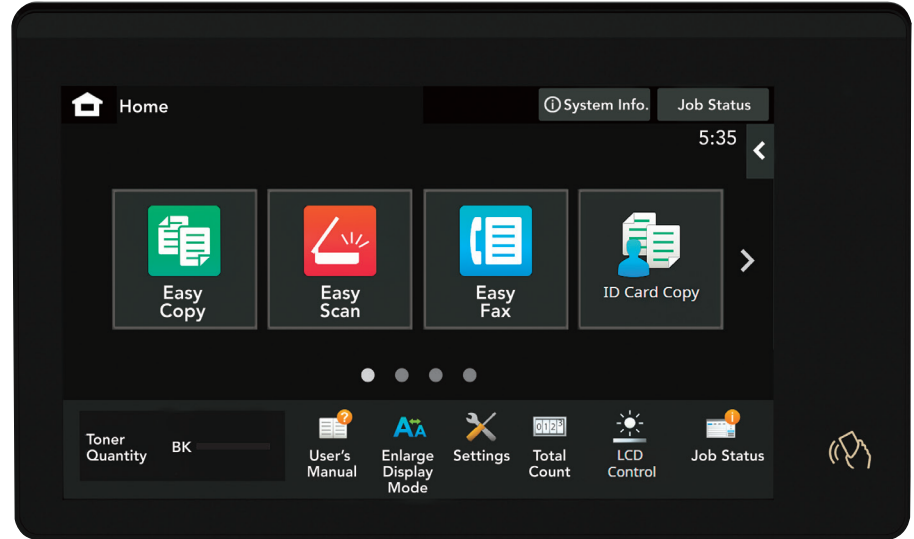
## Features that enhance productivity and efficiency

Adaptable user interfaces that deliver safe and secure features.

Work efficiently

Collaborate

Secure document workflows



7" (diagonally measured) customizable touchscreen display.



BP-B550WD shown with Inner Finishing Unit in a 4-drawer configuration.

- 100-sheet duplexing single-pass feeder offers scan up to 130 images per minute and 50-sheet reversing single-pass feeder offers scan up to 40 images per minute.
- Flexible paper handling supports media up to 220 gsm, allowing users to print on a wide variety of paper stock or media.
- Optional inner finisher offers single position stapling and can hold up to 280 sheets of paper.
- Smart controller design ensures MFP firmware is current by periodically checking for updates.
- Built-in optical character recognition (OCR) function can convert scanned documents to text-searchable PDF format and Microsoft Office file formats.
- ENERGY STAR® 3.2 certified and offers among the lowest standby power consumption in the category.
- Enhanced touchscreen delivers an accurate, responsive user experience and provides easy access to features.
- Collaborate with hybrid workers using popular cloud services, such as Microsoft Teams, Google Drive™, Dropbox and others.
- Strong, multi-layered security such as system integrity check at startup, firmware attack prevention and optional Bitdefender antivirus to help protect your data.
- Supports native Universal Print from Microsoft, enabling businesses to easily adapt to this popular cloud service.
- Wireless LAN supports 5G Wi-Fi for stable, high-speed network communication.
- Sharp OSA® Technology provides a secure and intuitive user experience for integrated workflows.

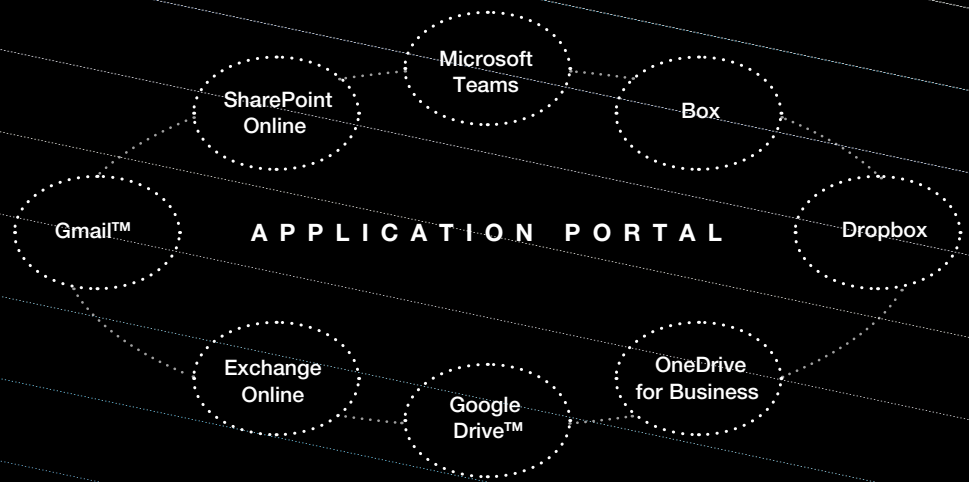
## Designed to accommodate diverse workstyles

From media handling to workflow and collaboration, these compact MFPs deliver the features businesses need.

Sharp makes it easy for businesses to execute jobs quickly, leaving more time for the actual business at hand. Scan large documents at up to 130 images per minute (ipm) using the 100-sheet duplexing single pass feeder (BP-B550WD). Image processing technology and Artificial Intelligence (AI) can automatically adjust resolution and compression as well as detect original size and adjust for skewed documents when scanning. The tablet-style touchscreen delivers an accurate, responsive experience, while menu-driven Easy Modes offer fast, simple operation enabling users to get their copying and scanning tasks done in less time.

## Print and Share Documents Easily

Seamlessly collaborate with colleagues when working remotely. With Cloud Connect, businesses gain access to popular cloud services including Microsoft Teams, Google Drive and more. The Sharp Application Portal makes it easy for administrators to add new apps and update existing apps right from the smart MFP touchscreen.



### Integrate with Email Applications

In addition to native capability, the Email Connect feature enables seamless scan-to-email integration with Microsoft Exchange/365 and Gmail™ user accounts, making it easy to identify the sender of scanned files.

### Intelligent Image Processing

Scan documents to popular file formats including Microsoft Word, PowerPoint and Excel, Searchable PDF, Encrypted PDF and others. Direct Print the same file types from thumb drives, cloud applications and mobile devices.\* Adobe Embedded Print Engine direct prints PDF files with greater speed and rendering accuracy.

### Flexible Printing Solutions

PCL 6 and Adobe PostScript 3 printing helps users speed through their work. The 128 GB solid state drive processes jobs quickly. Serverless Print Release enables users to print a job and release it from up to ten supported models. Native Universal Print from Microsoft eliminates the need for on-premises infrastructure, and enables IT to manage printers directly through a centralized portal.



*\*This function is enabled via Qualcomm DirectOffice technology.*

# Smart · Connected · Secure

## Integrating technology and functionality

The Sharp monochrome MFPs provide built-in features to increase office output.

### Document Feeders

100-sheet duplexing single-pass feeder (BP-B550WD) offers scan up to 130 images per minute and (BP-B540WR) 50-sheet reversing single-pass feeder offers scan up to 40 images per minute.

### Smart Scan

Image processing technology and AI can automatically adjust resolution and compression and detect size to adjust for skew.

### Optical Character Recognition (OCR)

Built-in OCR function can convert scanned documents to text-searchable PDF format and Microsoft Office file formats.

### Microsoft Friendly

Native integration with Universal Print and Microsoft Teams simplifies workflow and enhances collaboration.

### Advanced Multi-layer Security

Leading security features plus optional Bitdefender antivirus provide enhanced protection against network intrusions.

### Inner Finisher Option

Available compact inner finisher offers offset stacking, single position stapling and can hold up to 280 sheets of paper.

### Easy-to-Use Smart Touchscreen

Tablet-style menu provides quick access to features and functions.

### Flexible Paper Handling

Paper drawers feed up to 8½" x 14" paper and support media up to 220 gsm (80 lb. cover). Supports up to 2,350 sheets in paper drawers and bypass tray with options.

### Touchless Operation

Scan, Copy and Print Release with award-winning Synappx Go app.

### Compact PDF

Standard Compact PDF feature dramatically reduces the file size of most color scanned documents, resulting in decreased network traffic and more efficient use of disk and cloud storage.

### Easy Access to Cloud Services

Print and scan documents to popular cloud applications.

### Wireless Networking

5G Wi-Fi technology and WPA3™ encryption deliver fast, reliable data that helps provide strong protection from hackers.



BP-B550WD shown.

## Collaborate on-the-go with quick access to mobile devices

Sharp makes it easy to share data with tablets and smartphones in busy environments.



### Print with Popular Mobile Technologies

These versatile MFPs support printing from popular mobile technologies such as Apple AirPrint and Android printing with the Sharp Print Service plug-in.

### Advanced Wireless Networking

Print directly to the MFP from mobile devices without interfering with the corporate network. 5G technology and WPA3 encryption deliver fast reliable data that is well protected from malicious intruders.

### Touchless Operation with Synappx Go

With the Synappx Go app, it's easy to email or copy documents remotely. Tap the touchscreen with your smartphone for extended remote features such as print release, scan to/print from cloud services, and display collaboration by upgrading to the subscription version.

### Enhanced Security with Bitdefender

Optional Bitdefender anti-virus software provides enhanced protection against network intrusions.



## Centralized device management helps ensure optimal uptime

Seamlessly connect technology and drive collaboration with easy access solutions.

### Seamless Device Management

Available as a free download, Sharp Remote Device Manager (SRDM) simplifies device monitoring and management. The event-driven alerts help maximize uptime with centrally managed security settings, pre-configured driver distribution, energy save settings and more.

### 24/7 Training with My Sharp™

Managing all of the advanced features of your Sharp product is simple and easy. Ask your Authorized Sharp Dealer about the My Sharp website. This dedicated customer training website is customized to your BP-B540WR/B550WD and allows you to locate resources and find information specific to your configuration.

## Multi-layer security features

Utilizing leading security technology to help organizations protect their data and meet regulatory requirements.



### System Integrity Check at Startup

Protects system files from malware attacks.

### Firmware Attack Prevention

Can check for abnormal firmware at startup and can restore the original.

### Application Allowlisting

Prevents unauthorized files and applications from being loaded.

### Real-Time Intrusion Detection

Detects abnormal connection requests and denies access.

### Trusted Platform Module (TPM 2.0)

Provides added layer of protection for the SSD to safeguard data.



### Automatic Firmware Updates

Ensures security and other updates are done as soon as they become available.

### End-of-Lease Data Erase

Can protect privacy by deleting all data and personal information at trade-in time.

### Optional Virus Detection Kit Powered by Bitdefender

Provides comprehensive protection from inbound and outbound virus threats.

### Optional Print Security Service

24/7 alert monitoring with System Information and Event Management from ConnectWise™ (monitors 60+ MFP security alerts).\*

- **Active Directory (AD) Integration** Enables the MFP to join the network domain as a computer, making it a trusted device.
- **Supports AD Group Policy** Allows administrators to centrally manage select security settings and enforce their own policy.
- **256-bit AES Encryption** Ensures data that resides on the local drive is protected.
- **Protects Access to the Device** IP/MAC address filtering, 802.1x authentication and port control protect access to the device.
- **Protects Data in Transit** IPsec and SMB 3.1.1 protocols and TLS 1.3 use data encryption to protect data.

- **WPA3 Wi-Fi Encryption** Supports the latest data encryption standard for wireless networking security.
- **Authority Groups** Enables administrators to define various groups for different users, which can limit or restrict access to specific features.
- **Optional Data Security Kit** Offers expanded security functions and restricted access features for highly sensitive environments.



\*Available from participating dealers.

## Environmental commitment

Sharp is committed to environmental sustainability and corporate responsibility.

### A Responsible Approach to Design

Sharp MFPs adhere to the Sharp Corporation Green Products Guidelines, which requires designing products that consume less power, use recycled materials and reduce materials used in packaging.

### Toner Recycling Program

Sharp offers zero-waste-to-landfill recycling for Sharp consumables at no cost to our customers and encourages them to recycle their Sharp toner cartridges by providing them with a pre-paid recycling kit for return to our facility.

### Environmental Commitment

The Sharp Advanced Series models are ENERGY STAR 3.2 certified and RoHS compliant. These products also have one of the lowest TEC values in their category as well as one of the lowest stand-by power consumption ratings. Sharp MFPs are EPEAT® registered.

For more information about Sharp environmental leadership including information about energy efficient products, electronics, or toner cartridge recycling, please visit [www.sharpusa.com/environment](http://www.sharpusa.com/environment).

## Versatile Monochrome Multifunction Printers. Simply Smarter.

Designed to fit today's hybrid workstyles, the BP-B540WR and BP-B550WD offer intelligent features and connectivity that enable office workers to collaborate with colleagues seamlessly and securely wherever they are working. To learn more, visit [www.sharpusa.com](http://www.sharpusa.com).

# SHARP

SHARP ELECTRONICS CORPORATION  
100 Paragon Drive, Montvale, NJ 07645  
1-800-BE-SHARP • [www.sharpusa.com](http://www.sharpusa.com)

Design and specifications subject to change without notice.



SYNAPPX



Qualcomm® DirectOffice™

Bitdefender



2025 Sharp Electronics Corporation. All rights reserved. Sharp, Sharp OSA, My Sharp, and all related trademarks are trademarks or registered trademarks of Sharp Corporation and/or its affiliated companies. Microsoft, Active Directory, Excel, Microsoft Teams, OneDrive, PowerPoint, SharePoint, Windows, and Windows Server are trademarks or registered trademarks of the Microsoft group of companies. Android, Gmail, and Google Drive are trademarks or registered trademarks of Google LLC. Adobe and PostScript are either registered trademarks or trademarks of Adobe in the United States and/or other countries. Qualcomm DirectOffice is a product of Qualcomm Technologies, Inc. and/or its subsidiaries. Qualcomm is a trademark of Qualcomm Incorporated, registered in the United States and other countries. DirectOffice is a trademark of CSR Imaging US, LP, registered in the United States and other countries, used with permission. ENERGY STAR and the ENERGY STAR mark are registered trademarks owned by the U.S. Environmental Protection Agency. Box is a trademark, service mark, or registered trademark of Box, Inc. Dropbox is a trademark or registered trademark of Dropbox, Inc. PCL is a registered trademark of Hewlett-Packard Company. Bitdefender is a trademark or registered trademark of Bitdefender SRL. WPA3 is a trademark or registered trademark of Wi-Fi Alliance®. All other trademarks are the property of their respective owners.